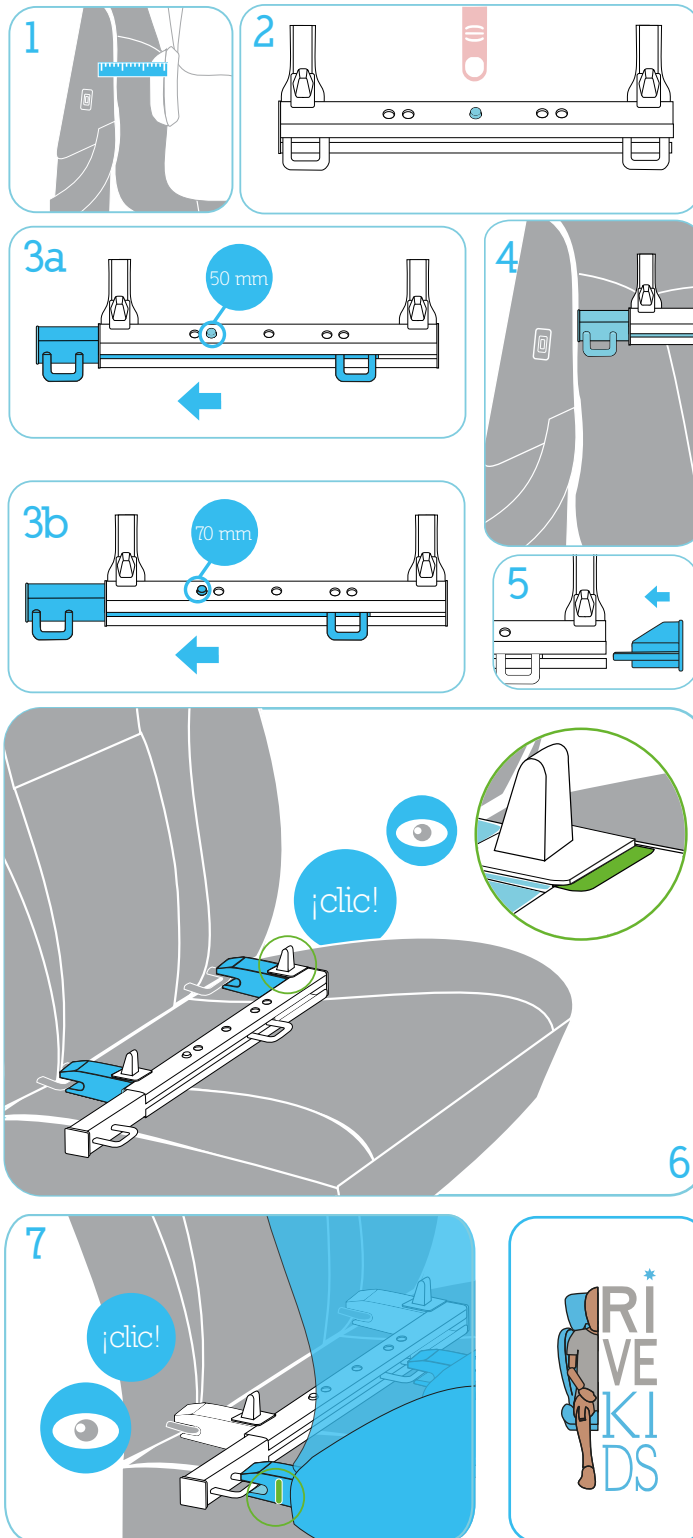


3 QUICK INSTALLATION GUIDE



These instructions contain important information on your RiveMove device, so please read them carefully. The contents include:

1. WHAT YOU MUST KNOW...
 2. PARTS
 3. QUICK INSTALLATION GUIDE
 4. BEFORE USING THE PRODUCT
 5. CONTROL AND REQUIREMENTS
 6. USE INSIDE THE VEHICLE
 7. CONSERVATION AND DISPOSAL
 8. SAFETY INSTRUCTIONS
 9. INSTALLATION
 10. REMOVAL
- ANNEX: COMPATIBILITIES

Always check for the latest version of the instructions at www.rivekids.com

Group 2/3



RiveMove is connected to the ISOFIX attachment points of the vehicle.



The RiveMove parts are recyclable.



RIVEKIDS
TECHNOLOGY



RIVEMOVE
“The true journey finishes how it began,
happily and innocently”

Instructions for use

Semi-universal product manufactured in Spain.



SAFETY



COMFORT



COMMITMENT

If you have any further questions,
please do not hesitate to get in touch with us.

RIVEKIDS TECHNOLOGY S.L.

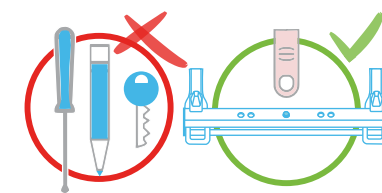
C/ Monasterio de Yuste Nº 5A, Bajo 1
47017 Valladolid (Spain)

CONTACT

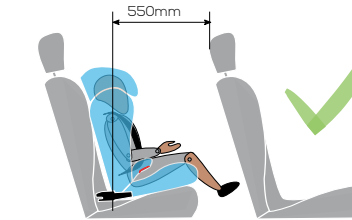
Tel.: +34 983 514 762
E-mail: info@rivekids.com
www.rivekids.com

www.rivekids.com

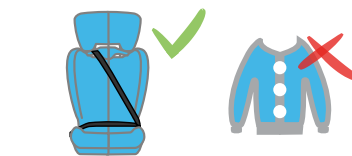
1 WHAT YOU MUST KNOW...



The slide and adjust clip (11) must always be pressed with the index finger; under no circumstances should a pen, screwdriver or any other object be used.

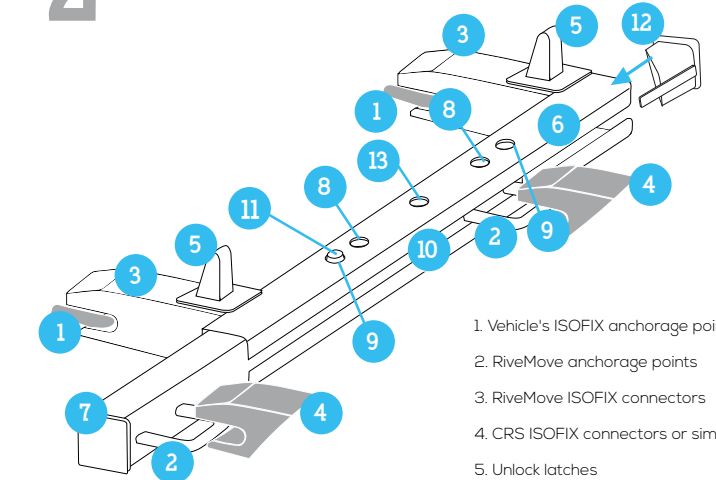


It is recommended to maximize this distance, which must be at least 550mm.



The CSR belt must be fastened tightly. Pull firmly until there is no gap between the child and belt. Coats are not recommended when using CRS.

2 PARTS



1. Vehicle's ISOFIX anchorage points
2. RiveMove anchorage points
3. RiveMove ISOFIX connectors
4. CRS ISOFIX connectors or similar
5. Unlock latches
6. Guide
7. Sliding bar
8. Position hole 50 mm
9. Position hole 70 mm
10. Scroll lane
11. Slide and adjust clip
12. Guide protectors
13. Nominal position

In the RiveMove box you will find: this instructions manual, one or two RiveMove units and one or two guide protectors (12) and a quality review process note which proves the correct functioning of your devices that have been individually verified by RiveKids Technology personnel, so that they may present minor imperfections in the decorative layer. There are two labels attached to your RiveMove that outline the most important steps to follow for correct installation.

4 BEFORE USING THE PRODUCT

We are delighted that you have chosen a RiveMove product for your family, enhancing the safety of your child car seat and optimising the use of space in the rear seats of your vehicle. Your safety is what matters; if you are unsure of anything, please refrain from using the device until you have clarified your doubts by speaking to your dealer, distributor or by contacting us directly.

- ⚠** To ensure the device works optimally, it is essential to install and use RiveMove by precisely following these instructions. Not recommended for any use other than that described in the instructions.
- ⚠** RiveMove offers unique technology compatible with all ISOFIX-equipped CRS on the market. However, it should only be used with CRS from Groups II/III with adjustable ISOFIX connectors so that the child car seat, once connected to RiveMove, can be adjusted and moved towards the backrest of the vehicle seat, in turn bridging the gap created by the device. This technology is also compatible with 90% of cars in Spain. (Check compatibility with your car model in Annex 1).
- It is a perfect match when the car and CRS manufacturers both state in their manuals that the vehicle is compatible with ISOFIX child restraint systems or similar, or that the CRS incorporates an ISOFIX anchorage system.
- ⚠** RiveMove has undergone impact tests in accordance with the requirements set out in European Regulations for Child Restraint Systems ECE R44/04 and ECE R129. Please note that in the event of an accident, the device may not respond as expected if it is not installed properly or if any change is made to the RiveMove device without obtaining the express authorisation from RiveKids Technology S.L.
- ⚠** RiveMove alone is NOT a safety element; for optimal performance the device should be firmly attached to the ISOFIX anchors of the vehicle in addition to the CRS ISOFIX connectors or similar. Moreover, to ensure that RiveMove works properly, the CRS should be secured using the vehicle's 3 point seat belt, as well as the ISOFIX anchor or similar, and any anti-rotation system available (additional support leg, top tether). The proper use of RiveMove does not impair the normal functioning of the CRS or vehicle. The better the CRS, the better the overall performance of the combination of devices.
- This device is not a weapon; RiveKids Technology S.L. accepts no responsibility for the repercussions of any use other than that stated in these instructions.
- RiveMove must be handled and installed by an adult.

5 CONTROL AND REQUIREMENTS

RIVEMOVE	CONTROL AND REQUIREMENTS According to ECE R44/04			CONTROL AND REQUIREMENTS According to ECE R129 i-Size	
	Group	Weight	Age	Group	Height
Frontal and side impact tests*	II + III	15 - 36 kg	4 - 12 years	II + III	100 - 150 cm

* Frontal and side impact tests were carried out in accordance with specifications from those standards (frontal at 50 km/h; side at 24.5 km/h), with approved seats and in their closest position to the backrest, without reclining.

- ⚠** RiveMove is not to be used with rear thorax side airbags.

KEY

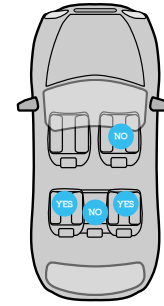
- ⚠** HAZARD: Risk of suffering serious personal injury
- ⚠** WARNING: Risk of suffering mild personal injury
- ⚠** CAUTION: Risk of material damage
- 🗨** Useful observations

6 USE INSIDE THE VEHICLE

RiveMove has been tested for use with CRS installed in cars with 3 point seat belts, against frontal and side impacts.

Accepted uses of RiveMove in vehicles:

Forward-facing	Yes
Rear-facing	No
With 2 point seat belt	No
With 3 point seat belt	Yes
With ISOFIX anchorage points (between the seat and the backrest)	Yes
In the front passenger seat	No
In the side seats at the rear	Yes
In the middle seat at the rear	No
In bench seats in 7-seater cars (folding seats)	No



With CRS from groups II/III	Yes
With CRS from groups 0/I	No

Observe the indications made by the manufacturer of the vehicle with respect to any restriction of simultaneous use in adjacent positions of ISOFIX child restraint systems or i-Size child restraint systems and / or between ISOFIX positions, i-Size positions and seat positions for Adults.

7 CONSERVATION AND DISPOSAL

- ⚠** The plastic parts that cover the ISOFIX connectors (3), the unlock latches (5) and the guide protector (12) can be cleaned with a soap solution. Avoid the use of corrosive detergents. The metal bars can be cleaned with any product designed for use on metals.

To dispose of RiveMove, please visit a specialist waste management centre where it can be treated like any other metallic component.

8 SAFETY INSTRUCTIONS

- ⚠** Please take your time to carefully and thoroughly read these instructions. When finished, keep them safe in your vehicle. Their latest version can always be found at www.rivekids.com

In the event of an accident with an impact speed higher than 5 km/h, the device may be damaged without the damage being visible to the naked eye. In this case, the device should be replaced for a new one, and the old one must never be used again. Carefully check the condition of the CRS connected to the device; the anchorage points in particular may have suffered damage preventing further use.

Request the critical inspection of the device after it has been damaged (for example, if it has been dropped). Regularly check if the key parts (ISOFIX anchorage points, ISOFIX connectors, guide inserts) and the joints with the CRS are damaged. Never grease or lubricate parts of the child car seat.

🗨 This symbol on RiveMove diagrams or in these instructions means that you should hear a click noise when the device has been attached properly.

👁 This symbol on RiveMove diagrams or in these instructions means that you should see a green mark on your device to indicate that it has been attached properly.

9 INSTALLATION

RiveKids Technology S.L. accepts no responsibility for the incorrect installation of the CRS. This section sets out the guidelines and steps to follow for installing the RiveMove device. For the subsequent installation of the CRS, follow the instructions provided by the corresponding manufacturer.

- The device is packed in its nominal position. **⚠** The position should be adjusted according to the characteristics of each car, it is advisable to measure the space between the installed CRS without RiveMove and the door panel to determine the optimal sliding position of the RiveMove (Figure 1).
- Before installing RiveMove, it is advisable to adjust its position. To extend the device, push the slide and adjust clip (11) downwards (Figure 2) and in turn move the sliding bar (7) to the desired position: extended 50mm (Figure 3a) or extended 70mm (Figure 3b). **⚠** To check that the device has been extended correctly, pull the sliding bar (7) and make sure that it does not move more than 3mm. The slide and adjust clip (11) should protrude from the guide (6).
- The 50mm and 70mm positions are marked by holes (8) and (9) respectively. Depending on the installation of the device, whether on the right or left rear seat, the sliding bar (7) of the device should move towards the right or the left, but always in the direction of the door (Figure 4).
- ⚠** Attach the guide protector (12) as shown in Figure 5.
- In the previously chosen position, insert the RiveMove ISOFIX connectors (3) into the vehicle's ISOFIX anchorage points (1). RiveMove is correctly attached to the anchorage points of the car when a 'click' is heard at the RiveMove ISOFIX connectors (3) or similar and the unlock latches (5) move towards the backrest, unveiling a green tab underneath (Figure 6). Firmly pull the RiveMove to ensure it has been properly installed.
- If all the previous steps have been followed, RiveMove should be properly installed at this stage.
- To install the CRS onto the RiveMove, insert the CRS ISOFIX connectors or similar (4) into the RiveMove anchorage points (2). Consult the warning signs in the CSR instructions to ensure proper installation. Please note that, when the CRS instructions mention the anchorage points of the car, you should install the CRS at the RiveMove anchorage points (2).

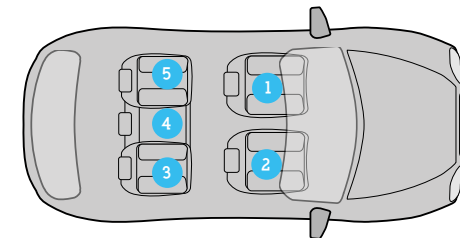
10 REMOVAL

- To remove RiveMove it is advisable to first detach the CRS by following the corresponding manufacturer's instructions.
 - Afterwards, in order to detach RiveMove from the vehicle's ISOFIX anchorage points (1), push the unlock latches (5) towards you and pull the device.
- ⚠** For optimal conservation, store the product in its original packaging and in its nominal position.

ANNEX Vehicle compatibility table¹

- 🗨** For further information on this topic, please do not hesitate to get in touch with us.

We are continuously taking measurements with the aim of offering the biggest range of compatibility available, therefore, if your car is not on this list, please contact us for additional information.



Model	Position and compatibility	Model	Position and compatibility	Model	Position and compatibility	Model	Position and compatibility	Model	Position and compatibility	Model	Position and compatibility
ALFA ROMEO		DACIA		YESGUAR		MERCEDES		PEUGEOT		SUBARU	
Giulia	3.5 YES	Duster	3.5 YES	E-pace	3.5 YES	Citan	3.5 YES	208	3.5 YES	Forester	3.5 YES
Giulietta	3.5 YES	Logan	3.5 YES	F-pace	3.5 YES	Class A	3.5 YES	308	3.5 YES	Levorg	3.5 YES
Mito	3.5 YES	Sander	3.5 YES	XE	3.5 YES	Class B	3.5 YES	308 sw	3.5 YES	Outback	3.5 YES
Stelvio	3.5 YES	FIAT		XF	3.5 YES	Class C	3.5 YES	308 RSH	3.5 YES	XV	3.5 YES
				XJ	3.5 YES	Class E	3.5 YES	3008	3.5 YES	SUZUKI	
A3	3.5 YES	SOOL	3.5 YES			Class S	3.5 YES	3008	3.5 YES	Baleno	3.5 YES
A4	3.5 YES	S00X	3.5 YES	JEEP		Class G	3.5 YES			S-Cross	3.5 YES
A5	3.5 YES	Panda	3.5 YES	Cherokee	3.5 YES	GL	3.5 YES	Cayenne	3.5 YES	Vitara	3.5 YES
A6	3.5 YES	Punto	3.5 YES	Grand Cherokee	3.5 YES	GLA	3.5 YES	Maccan	3.5 YES		
A7	3.5 YES	Tipò	3.5 YES	Renegade	3.5 YES	GLC	3.5 YES			Model S	3.5 YES
A8	3.5 YES	FORD		Wrangler	3.5 YES	GLE	3.5 YES	RENAULT		Model X	3.5 YES
Q2	3.5 YES	BMMax	3.5 YES			ML	3.5 YES	Captur	3.5 YES		
Q3	3.5 YES	CHMax	3.5 YES	Ceed	3.5 YES			Clio	3.5 YES	TOYOTA	
Q5	3.5 YES	EcoSport	3.5 YES	Optima	3.5 YES			Scenic	3.5 YES	Auris	3.5 YES
Q7	3.5 YES	Edge	3.5 YES	Picanto	3.5 YES	Club Man	3.5 YES	KadYEsR	3.5 YES	AvenYESs	3.5 YES
		Fiesta	3.5 YES	Pro_coe'd	3.5 YES	Country Man	3.5 YES	Koleos	3.5 YES	AvenYESs Touring	3.5 YES
		BMW		Rio	3.5 YES	One	3.5 YES	Megane 4	3.5 YES	C-HR	3.5 YES
Serie 1	3.5 YES	Focus	3.5 YES	Sorento	3.5 YES			Megane 4N Bose	3.5 YES	Corolla Verso	3.5 YES
Serie 2	3.5 YES	Kuga	3.5 YES	Soulad	3.5 YES	ASX	3.5 YES	Scenic	3.5 YES	Land Cruiser	3.5 YES
Serie 3 Berlina	3.5 YES	Mondeo	3.5 YES	Sportage	3.5 YES	Eclipse	3.5 YES	Scenic	3.5 YES	Prus	3.5 YES
Serie 3 GT	3.5 YES	Tourneo	3.5 YES	Stinger	3.5 YES	Montara	3.5 YES	Talisman	3.5 YES	Yaris	3.5 YES
Serie 4 Gran Coupé	3.5 YES	HONDA		Stonc	3.5 YES	Outlander	3.5 YES	Zoe	3.5 YES		
Serie 5 Berlina	3.5 YES	Civic	3.5 YES	Niro	3.5 YES	Space Star	3.5 YES			SEAT	
Serie 5 GT	3.5 YES	CRV	3.5 YES							ALFA ROMEO	
Serie 6 Gran Coupé	3.5 YES	HRV	3.5 YES	LAND ROVER		NISSAN		Altea	3.5 YES	Arteon	3.5 YES
Serie 7	3.5 YES	YESzz	3.5 YES	Discovery	3.5 YES	Juke	3.5 YES	Altea XL	3.5 YES	Golf	3.5 YES
X1	3.5 YES	HYUNDAI		Discovery Sport	3.5 YES	Murano	3.5 YES	Arona	3.5 YES	Golf Sportage	3.5 YES
X2	3.5 YES	Elantra	3.5 YES	Evogue	3.5 YES	Leaf	3.5 YES	Ateca	3.5 YES	Passat	3.5 YES
X3	3.5 YES	GeneYESs	3.5 YES	Range Rover	3.5 YES	Micra	3.5 YES	Exeo	3.5 YES	Polo	3.5 YES
X4	3.5 YES	GeneYESs	3.5 YES	Range Rover Sport	3.5 YES	Pulsar	3.5 YES	Ibiza	3.5 YES	T-Roc	3.5 YES
X5	3.5 YES	Range Rover Velar	3.5 YES	Dashqai	3.5 YES	Pulsar	3.5 YES	León	3.5 YES	Tiguan	3.5 YES
X6	3.5 YES	LEXUS		Teledo	3.5 YES			Toledo	3.5 YES	Touareg	3.5 YES
		CT	3.5 YES			Xtrail	3.5 YES				
		GS	3.5 YES					SKODA		VOLVO	
		IS	3.5 YES	Adam	3.5 YES			Fabia	3.5 YES	S40	3.5 YES
		LS	3.5 YES	Astra	3.5 YES			Karoq	3.5 YES	S60	3.5 YES
		NX	3.5 YES	Corso	3.5 YES			Kodlak	3.5 YES	S80	3.5 YES
		RX	3.5 YES	Crossland	3.5 YES			Octavia	3.5 YES	V40	3.5 YES
				Grandland	3.5 YES			Rapid	3.5 YES	V50	3.5 YES
				Grandland	3.5 YES			Scout	3.5 YES	V60	3.5 YES
				INFINITI		MAZDA		Spaceback	3.5 YES	V70	3.5 YES
				KUV 500	3.5 YES	Meriva	3.5 YES	Supert	3.5 YES	XC40	3.5 YES
						Mokka	3.5 YES	Yeti	3.5 YES	XC60	3.5 YES
						Turbo	3.5 YES			XC70	3.5 YES
						Zafira	3.5 YES				
								SSANGYONG			
								Korando	3.5 YES	XC90	3.5 YES
								Rexton	3.5 YES		
								Thull	3.5 YES		
								XUV	3.5 YES		

¹ Models measured in 2015 - 2017

It is completely normal to witness minor wear and tear over time, such as scratches or slight defects to the top decorative layer. However, given that it is a safety device, it is advisable to regularly check its condition and replace the device for a new one in the event of corrosion (following prolonged exposure to harsh environmental conditions), and/or deformation, whether as a result of having been dropped or suffered a blow. The deterioration of stickers or plastic covers does not render the device unserviceable, but it can impair proper anchorage and therefore its safe functioning, or damage surrounding elements (seats, seat belts, door panels, etc.). Use the device at your own risk. RiveKids Technology S.L. accepts no responsibility for misuse of the device, or any damage or injury arising from the failure to follow these instructions for use. Do not dismantle, repair or replace any of the parts comprising the device. RiveKids Technology S.L. disclaims all responsibility for any tampering of the device by third parties outside of RiveKids Technology S.L.